

NOTE: An activated carbon filter may contain a small amount of carbon fines (very fine black powder) and a new cartridge, after installation, should be flushed with sufficient water to remove the fines before using the water.

NOTE: This replacement cartridge has a limited service life. Changes in taste, color and flow of the water being filtered are signals that replacement of the cartridge may be necessary.

CAUTION: Filter must be protected against freezing. Failure to do so may result in cracking of the filter and water leakage.

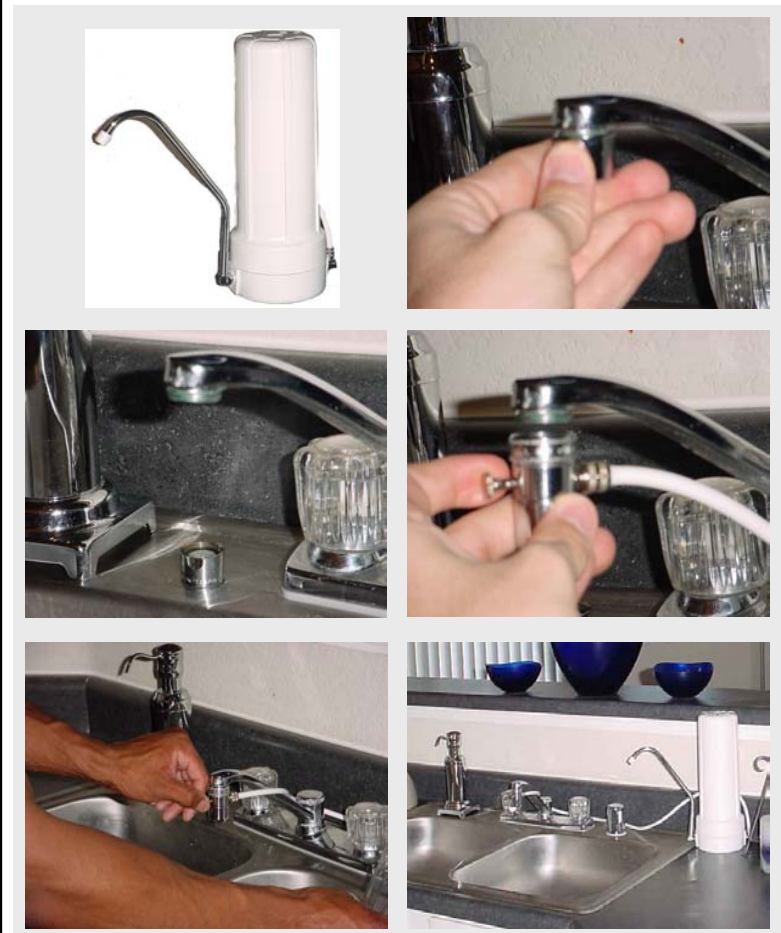
WARNING: Do not use with water that is microbiologically unsafe or of unknown quality without adequate disinfection before or after the unit.

IMPORTANT NOTICE: To prevent costly repairs or possible water damage we strongly recommend that the bowl or sump of all plastic housings be replaced every ten years. If your sump has been in use for more than the recommended period, it should be replaced immediately. Be sure to date any new or replacement sump for future reference and indicate the next recommended replacement date.



Advanced Water Filters
Where Technology and Water Combine
Perfect Water Technologies, Inc.
Copyright © 2004

Tap Master Jr.® Series Installation & Service Manual



Installation Instructions

1. **COVER THE SINK DRAINS.** Place the Tap Master Jr. next to sink. Either side OK.
2. Unscrew the aerator tip from your sink faucet. If the tip is stuck, cover the tip with a rag or towel to protect its finish, and use a pair of pliers to loosen. Place the aerator tip in a safe place for storage.
3. Screw on the diverter valve, or if the thread sizes do not match, use the included thread adapter between the diverter valve, and the sink faucet.
4. Turn on the cold water; open the diverter valve until water begins to run from the Tap Master Jr. Some water discoloration and air bubbles may be present due to loose carbon. Let water run through the Tap Master Jr. for 10 minutes to flush out the system completely.

NOTE: Do not filter hot water through your Tap Master Jr.

Filter Change Instructions

Tools Required

Towel Housing wrench
Bleach

1. Turn off water supply to filter.
2. Unscrew housing using housing wrench.

NOTE: When opening filter housing to change cartridge, it is common for o-ring/gasket to lift out of housing and stick to cap.

3. Remove used cartridge and discard. Rinse out housing and fill about 1/3 full with water. Add about 2 to 3 tablespoons of bleach and scrub thoroughly with brush or sponge. Rinse thoroughly. Allow to air dry.
4. Remove O-ring/gasket from sump and wipe groove and O-ring/gasket clean. Lubricate O-ring/gasket with a coating of clean silicone grease. DO NOT use Vaseline or petroleum based lubricant. Place O-ring/gasket back in place and press O-ring down into the groove with two fingers (or place gasket on rim of sump).

NOTE: This step is important to ensure proper filter seal. Make sure the O-ring is seated level in the groove (or gasket is on rim of sump).

CAUTION: If O-ring/gasket appears damaged or crimped it should be replaced at this time.

5. Insert a new cartridge into the sump making sure that it slips down over the sump standpipe.
6. Screw the sump onto the cap and tighten with housing wrench. Make sure cartridge slips over the cap standpipe.
7. Turn on the water supply slowly to allow housing to fill with water.
8. Run water until water runs clear and free from air bubbles.
9. Check for leaks before leaving installation.